

# STAT5B (Ab-731) Antibody



PACO23025

---

## Product Information

**Size:**

100ul

**Reactivity:**

Human, Mouse, Rat

**Source:**

Rabbit

**Isotype:**

IgG

**Applications:**

ELISA, WB, IHC

**Recommended dilutions:**

ELISA:1:2000-1:10000, WB:1:500-1:3000,  
IHC:1:50-1:100

**Protein Background:**

Carries out a dual function: signal transduction and activation of transcription. Mediates cellular responses to the cytokine KITLG/SCF and other growth factors. Binds to the GAS element and activates PRL-induced transcription.

**Gene ID:**

STAT5B

**Uniprot**

P51692

**Synonyms:**

Signal transducer and activator of transcription 5B;

**Immunogen:**

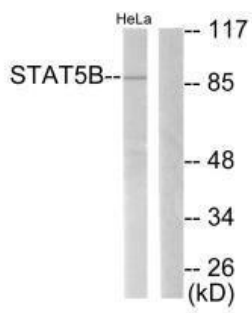
Synthesized non-phosphopeptide derived from human STAT5B around the phosphorylation site of serine 731(A-P-S-P-A).

**Storage:**

Rabbit IgG in phosphate buffered saline (without Mg<sup>2+</sup> and Ca<sup>2+</sup>), pH 7.4, 150mM NaCl, 0.02% sodium azide and 50% glycerol.

## Product Images

---



Western blot analysis of extracts from RAW264.7 cells, treated with EGF (200ng/ml 30min), using STAT5B (Ab-731) antibody.

Immunohistochemical analysis of paraffin-embedded human colon carcinoma tissue using STAT5B (Ab-731) antibody.

