

# NTRK2 Antibody



PACO23024

---

## Product Information

**Size:**

100ul

**Reactivity:**

Human, Mouse

**Source:**

Rabbit

**Isotype:**

IgG

**Applications:**

ELISA, WB, IHC

**Recommended dilutions:**

ELISA:1:2000-1:10000, WB:1:500-1:3000,  
IHC:1:50-1:100

**Protein Background:**

**Gene ID:**

NTRK2

**Uniprot**

Q16620

**Synonyms:**

BDNF/NT-3 growth factors receptor precursor; EC 2.7.10.1; GP145-TrkB; GP145-TrkB/GP95-TrkB; kinase TrkB

**Immunogen:**

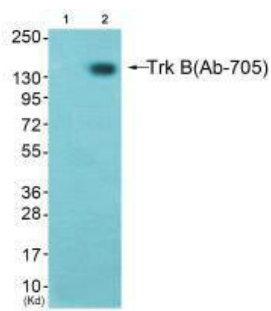
Synthesized peptide derived from Internal of human Trk B.

**Storage:**

Rabbit IgG in phosphate buffered saline (without Mg<sup>2+</sup> and Ca<sup>2+</sup>), pH 7.4, 150mM NaCl, 0.02% sodium azide and 50% glycerol.

## Product Images

---



Western blot analysis of extracts from K562 cells (Lane 2), using Trk B (Ab-705) antibody. The lane on the left is treated with synthesized peptide.

Immunohistochemistry analysis of paraffin-embedded human brain tissue using Trk B antibody.

