

ANGPTL3 Antibody



PACO23022

Product Information

Size:

100ul

Reactivity:

Human, Mouse, Rat

Source:

Rabbit

Isotype:

IgG

Applications:

ELISA, WB, IHC

Recommended dilutions:

ELISA:1:2000-1:10000, WB:1:500-1:1000,
IHC:1:50-1:200

Protein Background:**Gene ID:**

ANGPTL3

Uniprot

Q9Y5C1

Synonyms:

Angiotensin-related protein 3, FHBL2, ANGPT5

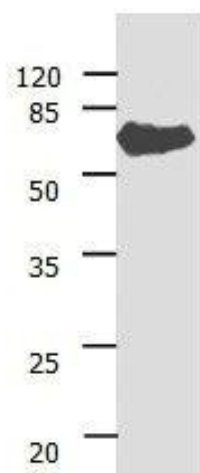
Immunogen:

Fusion protein corresponding to C terminal 300 amino acids of Human Angiotensin-related protein 3.

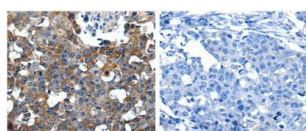
Storage:

Supplied at 0.8mg/mL in phosphate buffered saline (without Mg²⁺ and Ca²⁺), pH 7.3, 0.05% sodium azide and 50% glycerol.

Product Images



Gel: 10%SDS-PAGE Lysate: 30 ug Human liver cancer tissue lysate
Primary antibody: 1/400 dilution Secondary antibody: Donkey anti
Rabbit IgG - H&L (HRP) at 1/ 3000 dilution Exposure time: 1 minute.



The image on the left is immunohistochemistry of paraffin-embedded Human breast cancer tissue using 31029(ANGPTL3 Antibody) at dilution 1/8, on the right is treated with the fusion protein.