

PACO23011

Product Information

Size:

100ul

Reactivity:

Human, Rat

Source:

Rabbit

Isotype:

IgG

Applications:

ELISA, WB, IF

Recommended dilutions:

ELISA:1:2000-1:10000, WB:1:500-1:1000,
IF:1:100-1:200

Protein Background:

GFAP, a class-III intermediate filament, is a cell-specific marker that, during the development of the central nervous system, distinguishes astrocytes from other glial cells.

Gene ID:

GFAP

Uniprot

P14136

Synonyms:

FLJ45472

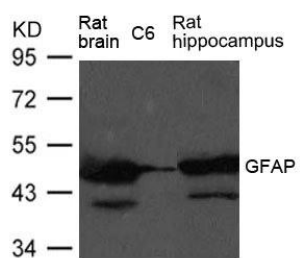
Immunogen:

Peptide sequence around aa. 423~427 (E-S-K-Q-E) derived from Human GFAP.

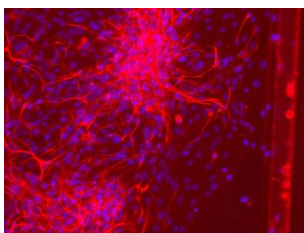
Storage:

Supplied at 1.0mg/mL in phosphate buffered saline (without Mg²⁺ and Ca²⁺), pH 7.4, 150mM NaCl, 0.02% sodium azide and 50% glycerol.

Product Images



Western blot analysis of extract from Rat brain, Rat hippocampus tissue and C6 cells using GFAP Antibody.



Immunofluorescence staining of paraffin-embedded Glioma cells of Spinal Cord using GFAP Antibody.