

# FAM129A Antibody



PACO22987

---

## Product Information

**Size:**

100ul

**Reactivity:**

Human

**Source:**

Rabbit

**Isotype:**

IgG

**Applications:**

ELISA, WB, IF

**Recommended dilutions:**

ELISA:1:2000-1:10000, WB:1:500-1:1000,  
IF:1:100-1:200

**Protein Background:**

Regulates phosphorylation of a number of proteins involved in translation regulation including EIF2A, EIF4EBP1 and RPS6KB1. May be involved in the endoplasmic reticulum stress response.

**Gene ID:**

FAM129A

**Uniprot**

Q9BZQ8

**Synonyms:**

FAM129A

**Immunogen:**

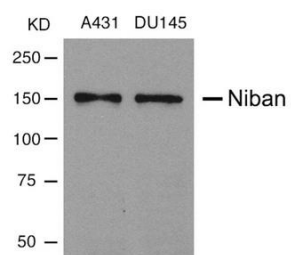
peptide sequence around aa. 912~916 (K-E-G-E-G) derived from Human Niban.

**Storage:**

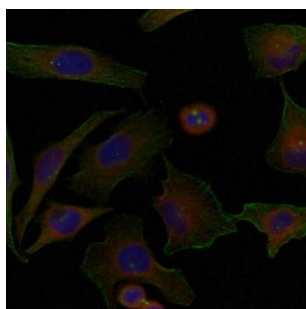
Supplied at 1.0mg/mL in phosphate buffered saline (without Mg<sup>2+</sup> and Ca<sup>2+</sup>), pH 7.4, 150mM NaCl, 0.02% sodium azide and 50% glycerol.

## Product Images

---



Western blot analysis of extracts from A431 and DU145 cells using Niban Antibody.



Immunofluorescence staining of methanol-fixed HeLa cells using Niban Antibody.