

MARCKS (Ab-158) Antibody



PACO22972

Product Information

Size:

100ul

Reactivity:

Human, Mouse, Rat

Source:

Rabbit

Isotype:

IgG

Applications:

ELISA, WB, IF

Recommended dilutions:

ELISA:1:2000-1:10000, WB:1:500-1:1000,
IF:1:100-1:200

Protein Background:

MARCKS is the most prominent cellular substrate for protein kinase C. This protein binds calmodulin, actin, and synapsin. MARCKS is a filamentous (F) actin cross-linking protein.

Gene ID:

MARCKS

Uniprot

P29966

Synonyms:

MACS; MARCS; PKCSL; PRKCSL; Protein kinase C substrate

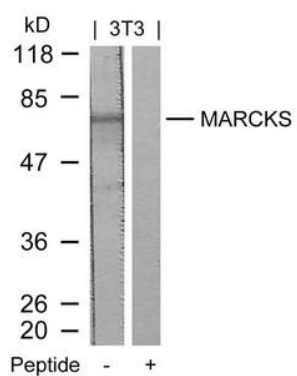
Immunogen:

Peptide sequence around aa.156~160 (R-F-S-F-K) derived from Human MARCKS.

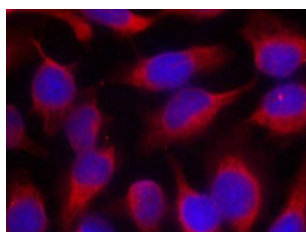
Storage:

Supplied at 1.0mg/mL in phosphate buffered saline (without Mg²⁺ and Ca²⁺), pH 7.4, 150mM NaCl, 0.02% sodium azide and 50% glycerol.

Product Images



Western blot analysis of extracts from 3T3 cells using MARCKS(Ab-158) Antibody and the same antibody preincubated with blocking peptide.



Immunofluorescence staining of methanol-fixed HeLa cells using MARCKS(Ab-158) Antibody.