

NFKB1 (Ab-932) Antibody



PACO22960

Product Information

Size:

100ul

Reactivity:

Human, Mouse, Rat

Source:

Rabbit

Isotype:

IgG

Applications:

ELISA, WB, IHC

Recommended dilutions:

ELISA:1:2000-1:10000, WB:1:500-1:1000,
IHC:1:50-1:200

Protein Background:**Gene ID:**

NFKB1

Uniprot

P19838

Synonyms:

DNA-binding factor KBF1; EBP-1; NF-kappa-B1 p84/NF-kappa-B1 p98; NFKB1; NFKB-p50

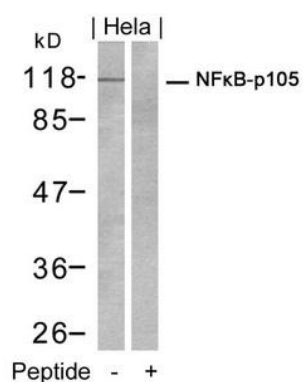
Immunogen:

Peptide sequence around aa.930~934 (E-T-S-F-R) derived from Human NFKB-p105.

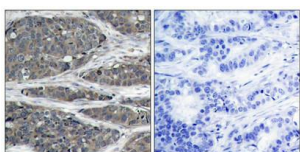
Storage:

Supplied at 1.0mg/mL in phosphate buffered saline (without Mg²⁺ and Ca²⁺), pH 7.4, 150mM NaCl, 0.02% sodium azide and 50% glycerol.

Product Images



Western blot analysis of extracts from HeLa cells using NF kappa B-p105 (Ab-932) Antibody and the same antibody preincubated with blocking peptide.



Immunohistochemical analysis of paraffin-embedded human breast carcinoma tissue using NFκB-p105(Ab-932) Antibody(left) or the same antibody preincubated with blocking peptide(right).