

# RAC1 (Ab-71) Antibody



PACO22947

---

## Product Information

**Size:**

100ul

**Reactivity:**

Human, Mouse, Rat

**Source:**

Rabbit

**Isotype:**

IgG

**Applications:**

ELISA, WB, IF

**Recommended dilutions:**

ELISA:1:2000-1:10000, WB:1:500-1:1000,  
IF:1:100-1:200

**Protein Background:**

Rac1 encoded by this gene is a GTPase which belongs to the RAS superfamily of small GTP-binding proteins. Members of this superfamily appear to regulate a diverse array of cellular events, including the control of cell growth, cytoskeletal reorganization, and the activation of protein kinases. Two transcript variants encoding different isoforms have been found for this gene.

**Gene ID:**

RAC1

**Uniprot**

P63000

**Synonyms:**

Ras-like protein TC25; Ras-related C3 botulinum toxin substrate 1; p21-Rac1

**Immunogen:**

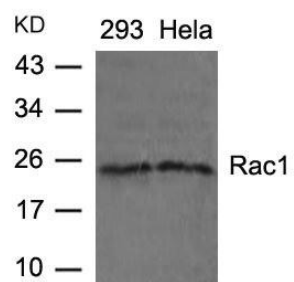
Peptide sequence around aa.69~73 (P-L-S-Y-P) derived from Human Rac1.

**Storage:**

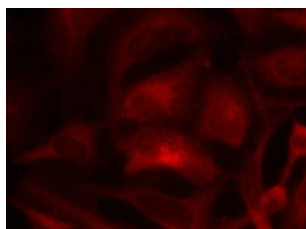
Supplied at 1.0mg/mL in phosphate buffered saline (without Mg<sup>2+</sup> and Ca<sup>2+</sup>), pH 7.4, 150mM NaCl, 0.02% sodium azide and 50% glycerol.

## Product Images

---



Western blot analysis of extracts from 293 and HeLa cells using Rac1(Ab-71) Antibody.



Immunofluorescence staining of methanol-fixed HeLa cells using Rac1(Ab-71) Antibody.