

PACO22903

Product Information

Size:

100ul

Reactivity:

Human, Mouse

Source:

Rabbit

Isotype:

IgG

Applications:

ELISA, WB, IHC

Recommended dilutions:

ELISA:1:2000-1:10000, WB:1:500-1:1000,
IHC:1:50-1:200

Protein Background:

Integrin α -V/ β -3 is a receptor for cytotactin, fibronectin, laminin, matrix metalloproteinase-2, osteopontin, osteomodulin, prothrombin, thrombospondin, vitronectin and von Willebrand factor. Integrin α -IIb/ β -3 is a receptor for fibronectin, fibrinogen, plasminogen, prothrombin, thrombospondin and vitronectin. Integrins α -IIb/ β -3 and α -V/ β -3 recognize the sequence R-G-D in a wide array of ligands. Integrin α -IIb/ β -3 recognizes the sequence H-H-L-G-G-G-A-K-Q-A-G-D-V in fibrinogen gamma chain. Following activation integrin α -IIb/ β -3 brings about platelet/platelet interaction through binding of soluble fibrinogen. This step leads to rapid platelet aggregation which physically plugs ruptured endothelial surface. In case of HIV-1 infection, the interaction with extracellular viral Tat protein seems to enhance angiogenesis in Kaposi's sarcoma lesions.

Gene ID:

ITGB3

Uniprot

P05106

Synonyms:

Platelet membrane glycoprotein IIIa

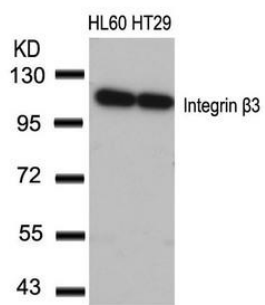
Immunogen:

Peptide sequence around aa. 771~775 (P-L-Y-K-E) derived from Human Integrin β 3.

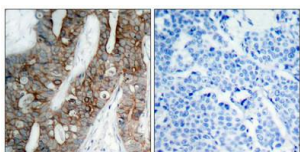
Storage:

Supplied at 1.0mg/mL in phosphate buffered saline (without Mg^{2+} and Ca^{2+}), pH 7.4, 150mM NaCl, 0.02% sodium azide and 50% glycerol.

Product Images



Western blot analysis of extracts from HL60 and HT29 cells using Integrin β 3(Ab-773) Antibody.



Immunohistochemical analysis of paraffin-embedded human breast carcinoma tissue using Integrin β 3(Ab-773) Antibody(left) or the same antibody preincubated with blocking peptide(right).