

STAT3 (Ab-727) Antibody



PACO22880

Product Information

Size:

100ul

Reactivity:

Human, Mouse, Rat

Source:

Rabbit

Isotype:

IgG

Applications:

ELISA, WB, IHC

Recommended dilutions:

ELISA:1:2000-1:10000, WB:1:500-1:1000,
IHC:1:50-1:200

Protein Background:

Transcription factor that binds to the interleukin-6 (IL-6)-responsive elements identified in the promoters of various acute-phase protein genes. Activated by IL31 through IL31RA.

Gene ID:

STAT3

Uniprot

P40763

Synonyms:

Acute-phase response factor

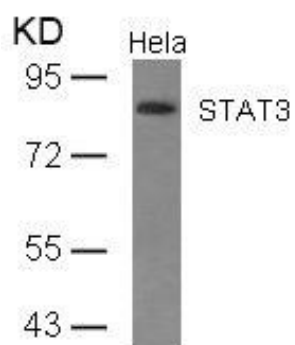
Immunogen:

Peptide sequence around aa. 725~729 (P-M-S-P-R) derived from Human STAT3.

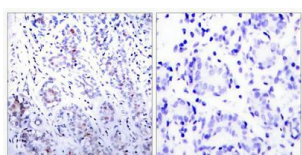
Storage:

Supplied at 1.0mg/mL in phosphate buffered saline (without Mg²⁺ and Ca²⁺), pH 7.4, 150mM NaCl, 0.02% sodium azide and 50% glycerol.

Product Images



Western blot analysis of extracts from HeLa cells using STAT3(Ab-727) Antibody.



Immunohistochemical analysis of paraffin-embedded human breast carcinoma tissue using STAT3(Ab-727) Antibody(left) or the same antibody preincubated with blocking peptide(right).