

PACO22851

---

## Product Information

**Size:**

100ul

**Reactivity:**

Human, Mouse, Rat

**Source:**

Rabbit

**Isotype:**

IgG

**Applications:**

ELISA, IHC

**Recommended dilutions:**

ELISA:1:2000-1:10000, IHC:1:50-1:100

**Protein Background:**

ZIP9 is believed to function as a zinc homeostasis regulator acting in the secretory pathway. This process seems to not significantly alter cytosolic zinc homeostasis.

**Gene ID:**

SLC39A9

**Uniprot**

Q9NUM3

**Synonyms:**

ZIP9; ZIP-9

**Immunogen:**

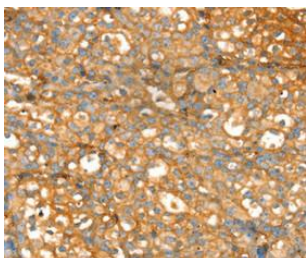
Synthetic peptide corresponding to a region derived from internal residues of human solute carrier family 39, member 9.

**Storage:**

Rabbit IgG in pH7.3 PBS, 0.05% NaN<sub>3</sub>, 50% Glycerol.

## Product Images

---



Immunohistochemical analysis of paraffin-embedded Human breast cancer tissue using at dilution 1/20.