

Product Information

Size:

100ul

Reactivity:

Human, Mouse, Rat

Source:

Rabbit

Isotype:

IgG

Applications:

ELISA, WB

Recommended dilutions:

ELISA:1:2000-1:10000, WB:1:500-1:3000

Protein Background:

This gene encodes a G-protein-coupled receptor for melanocyte-stimulating hormone and adrenocorticotrophic hormone that is expressed in tissues other than the adrenal cortex and melanocytes. This gene maps to the same region as the locus for benign neonatal epilepsy. Mice deficient for this gene have increased fat mass despite decreased food intake, suggesting a role for this gene product in the regulation of energy homeostasis. Mutations in this gene are associated with a susceptibility to obesity in humans.

Gene ID:

MC3R

Uniprot

P41968

Synonyms:

MC3; OB20; OQTL; BMIQ9; MC3-R

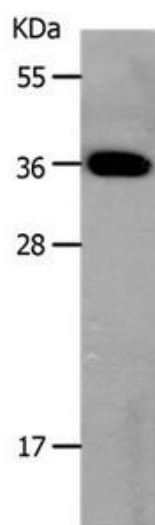
Immunogen:

Synthetic peptide corresponding to residues near the N terminal of human melanocortin 3 receptor.

Storage:

Rabbit IgG in pH7.3 PBS, 0.05% NaN₃, 50% Glycerol.

Product Images



Gel: 10%SDS-PAGE Lysates (from left to right): Mouse large intestine tissue Amount of lysate: 30ug per lane Primary antibody: 1/800 dilution Secondary antibody dilution: 1/8000 Exposure time: 20 seconds.