

# CD300LF Antibody



PACO22821

---

## Product Information

**Size:**

100ul

**Reactivity:**

Human

**Source:**

Rabbit

**Isotype:**

IgG

**Applications:**

ELISA, WB

**Recommended dilutions:**

ELISA:1:2000-1:10000, WB:1:500-1:3000

**Protein Background:**

Acts as an inhibitory receptor for myeloid cells and mast cells. Inhibits osteoclast formation.

**Gene ID:**

CD300LF

**Uniprot**

Q8TDQ1

**Synonyms:**

CMRF35-like molecule 1; CLM-1; CD300 antigen-like family member F; Immune receptor expressed on myeloid cells 1; IREM-1

**Immunogen:**

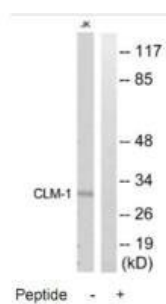
Synthesized peptide derived from internal of human CLM-1.

**Storage:**

Rabbit IgG in phosphate buffered saline (without Mg<sup>2+</sup> and Ca<sup>2+</sup>), pH 7.4, 150mM NaCl, 0.02% sodium azide and 50% glycerol.

## Product Images

---



Western blot analysis of extracts from Jurkat cells, using CLM-1 antibody.