

PACO22810

Product Information

Size:

100ul

Reactivity:

Human

Source:

Rabbit

Isotype:

IgG

Applications:

ELISA, WB

Recommended dilutions:

ELISA:1:2000-1:10000, WB:1:500-1:3000

Protein Background:

Actins are highly conserved proteins that are involved in various types of cell motility and are ubiquitously expressed in all eukaryotic cells By similarity.

Gene ID:

ACTBL2

Uniprot

Q562R1

Synonyms:

Beta-actin-like protein 2; Kappa-actin; ACTBL2;

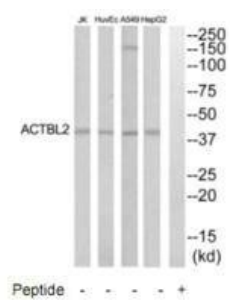
Immunogen:

Synthesized peptide derived from internal of human ACTBL2.

Storage:

Rabbit IgG in phosphate buffered saline (without Mg²⁺ and Ca²⁺), pH 7.4, 150mM NaCl, 0.02% sodium azide and 50% glycerol.

Product Images



Western blot analysis of extracts from HepG2, HuvEc, Jurkat and A549 cells, using ACTBL2 antibody.