

PACO22757

Product Information

Size:

100ul

Reactivity:

Human

Source:

Rabbit

Isotype:

IgG

Applications:

ELISA, WB

Recommended dilutions:

ELISA:1:2000-1:10000, WB:1:500-1:3000

Protein Background:

Regulatory light chain of myosin. Does not bind calcium.

Gene ID:

MYL3

Uniprot

P08590

Synonyms:

Myosin light chain 3; Myosin light chain 1; slow-twitch muscle B/ventricular isoform; MLC1SB; Ventricular/slow twitch myosin alkali light chain

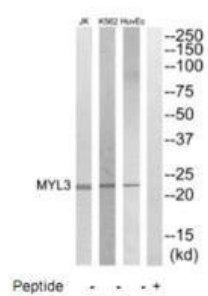
Immunogen:

Synthesized peptide derived from internal of human MYL3.

Storage:

Rabbit IgG in phosphate buffered saline (without Mg²⁺ and Ca²⁺), pH 7.4, 150mM NaCl, 0.02% sodium azide and 50% glycerol.

Product Images



Western blot analysis of extracts from HuvEC, K562 and Jurkat cells, using MYL3 antibody.