

## Product Information

**Size:**

100ul

**Reactivity:**

Human

**Source:**

Rabbit

**Isotype:**

IgG

**Applications:**

ELISA, WB

**Recommended dilutions:**

ELISA:1:2000-1:10000, WB:1:500-1:3000

**Protein Background:**

Plays a role in the p160 coactivator signaling pathway that mediates transcriptional activation by nuclear receptors. Plays a role in transcriptional activation of Wnt-responsive genes.

**Gene ID:**

SLC30A9

**Uniprot**

Q9Y6R2

**Synonyms:**

Zinc transporter 9; ZnT-9; Solute carrier family 30 member 9; Human embryonic lung protein; HUEL

**Immunogen:**

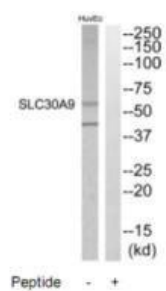
Synthesized peptide derived from internal of human SLC30A9.

**Storage:**

Rabbit IgG in phosphate buffered saline (without Mg<sup>2+</sup> and Ca<sup>2+</sup>), pH 7.4, 150mM NaCl, 0.02% sodium azide and 50% glycerol.

## Product Images

---



Western blot analysis of extracts from HuvEC cells, using SLC30A9 antibody.