

# ZDHHC2 Antibody



PACO22734

---

## Product Information

**Size:**

100ul

**Reactivity:**

Human

**Source:**

Rabbit

**Isotype:**

IgG

**Applications:**

ELISA, WB

**Recommended dilutions:**

ELISA:1:2000-1:10000, WB:1:500-1:3000

**Protein Background:**

Palmitoyltransferase specific for GAP43 and DLG4/PSD95 By similarity.

**Gene ID:**

ZDHHC2

**Uniprot**

Q9UIJ5

**Synonyms:**

Palmitoyltransferase ZDHHC2; Zinc finger DHHC domain-containing protein 2; DHHC-2; Zinc finger protein 372; Reduced expression associated with metastasis protein

**Immunogen:**

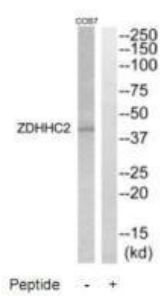
Synthesized peptide derived from internal of human ZDHHC2.

**Storage:**

Rabbit IgG in phosphate buffered saline (without Mg<sup>2+</sup> and Ca<sup>2+</sup>), pH 7.4, 150mM NaCl, 0.02% sodium azide and 50% glycerol.

## Product Images

---



Western blot analysis of extracts from COS7 cells, using ZDHHC2 antibody.