

PACO22728

Product Information

Size:

100ul

Reactivity:

Human, Mouse, Rat

Source:

Rabbit

Isotype:

IgG

Applications:

ELISA, WB

Recommended dilutions:

ELISA:1:2000-1:10000, WB:1:500-1:3000

Protein Background:

Activates HECT domain-containing E3 ubiquitin-protein ligases, including NEDD4 and ITCH, and consequently modulates the stability of their targets. As a result, controls many cellular processes. Prevents chronic T-helper cells-mediated inflammation by activating ITCH and thus controlling JUNB degradation. By similarity. In cortical neurons, mediates the ubiquitination of SLC11A2/DMT1 by NEDD4L, leading to down-regulation of the divalent metal transporter and protection of the cells from cobalt and iron toxicity. Modulates EGFR signaling through multiple pathways. In particular, may regulate the ratio of AKT1-to-MAPK8 signaling in response to EGF, acting on AKT1 probably through PTEN destabilization and on MAPK8 through ITCH-dependent MAP2K4 inactivation. As a result, may control cell growth rate.

Gene ID:

NDFIP1

Uniprot

Q9BT67

Synonyms:

Breast cancer-associated protein SGA-1M; MGC10924; N4WBP5; NDFIP1; Nedd4 family interacting protein 1

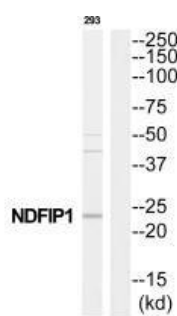
Immunogen:

Synthesized peptide derived from C-terminal of human NDFIP1.

Storage:

Rabbit IgG in phosphate buffered saline (without Mg²⁺ and Ca²⁺), pH 7.4, 150mM NaCl, 0.02% sodium azide and 50% glycerol.

Product Images



Western blot analysis of extracts from 293 cells, using NDFIP1 antibody.