

# ZADH2 Antibody



PACO22702

---

## Product Information

**Size:**

100ul

**Reactivity:**

Human, Mouse

**Source:**

Rabbit

**Isotype:**

IgG

**Applications:**

ELISA, WB

**Recommended dilutions:**

ELISA:1:2000-1:10000, WB:1:500-1:3000

**Protein Background:**

Belongs to the zinc-containing alcohol dehydrogenase family. Quinone oxidoreductase subfamily.

**Gene ID:**

ZADH2

**Uniprot**

Q8N4Q0

**Synonyms:**

EC 1. - . - . - ; zinc-binding alcohol dehydrogenase domain-containing 2;

**Immunogen:**

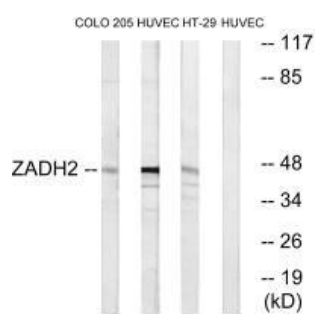
Synthesized peptide derived from internal of human ZADH2.

**Storage:**

Rabbit IgG in phosphate buffered saline (without Mg<sup>2+</sup> and Ca<sup>2+</sup>), pH 7.4, 150mM NaCl, 0.02% sodium azide and 50% glycerol.

## Product Images

---



Western blot analysis of extracts from COLO cells, HUVEC cells and HT-29 cells, using ZADH2 antibody.