

Product Information

Size:

100ul

Reactivity:

Human, Mouse, Rat

Source:

Rabbit

Isotype:

IgG

Applications:

ELISA, WB

Recommended dilutions:

ELISA:1:2000-1:10000, WB:1:500-1:3000

Protein Background:

Functions as 15-oxo-prostaglandin 13-reductase and acts on 15-keto-PGE1, 15-keto-PGE2, 15-keto-PGE1-alpha and 15-keto-PGE2-alpha with highest activity towards 15-keto-PGE2. Overexpression represses transcriptional activity of PPARG and inhibits adipocyte differentiation By similarity.

Gene ID:

PTGR2

Uniprot

Q8N8N7

Synonyms:

Prostaglandin reductase 2; PRG-2; EC 1.3.1.48; 15-oxoprostaglandin 13-reductase; Zinc-binding alcohol dehydrogenase domain-containing protein 1

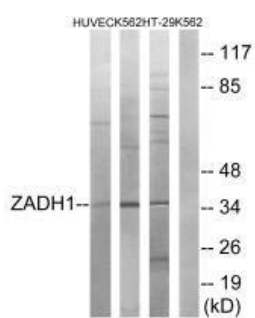
Immunogen:

Synthesized peptide derived from internal of human ZADH1.

Storage:

Rabbit IgG in phosphate buffered saline (without Mg²⁺ and Ca²⁺), pH 7.4, 150mM NaCl, 0.02% sodium azide and 50% glycerol.

Product Images



Western blot analysis of extracts from HUVEC cells, K562 cells and HT-29 cells, using ZADH1 antibody.