

SLC39A9 Antibody



PACO22700

Product Information

Size:

100ul

Reactivity:

Human

Source:

Rabbit

Isotype:

IgG

Applications:

ELISA, WB

Recommended dilutions:

ELISA:1:2000-1:10000, WB:1:500-1:3000

Protein Background:

May act as a zinc-influx transporter By similarity.

Gene ID:

SLC39A9

Uniprot

Q9NUM3

Synonyms:

Zinc transporter ZIP9; Zrt- and Irt-like protein 9; ZIP-9; Solute carrier family 39 member 9; SLC39A9

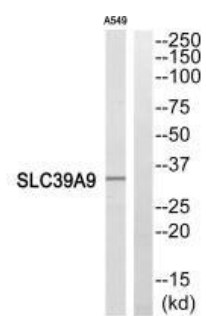
Immunogen:

Synthesized peptide derived from internal of human SLC39A9.

Storage:

Rabbit IgG in phosphate buffered saline (without Mg²⁺ and Ca²⁺), pH 7.4, 150mM NaCl, 0.02% sodium azide and 50% glycerol.

Product Images



Western blot analysis of extracts from A549 cells, using SLC39A9 antibody.