

SLC30A9 Antibody



PACO22698

Product Information

Size:

100ul

Reactivity:

Human

Source:

Rabbit

Isotype:

IgG

Applications:

ELISA, WB

Recommended dilutions:

ELISA:1:2000-1:10000, WB:1:500-1:3000

Protein Background:

Plays a role in the p160 coactivator signaling pathway that mediates transcriptional activation by nuclear receptors By similarity. Plays a role in transcriptional activation of Wnt-responsive genes By similarity.

Gene ID:

SLC30A9

Uniprot

Q6PML9

Synonyms:

Zinc transporter 9ZnT-9; Solute carrier family 30 member 9; Human embryonic lung protein; HUEL SLC30A9;

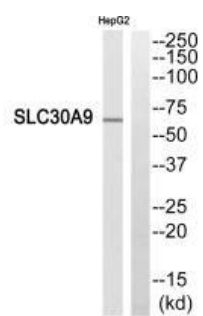
Immunogen:

Synthesized peptide derived from internal of human SLC30A9.

Storage:

Rabbit IgG in phosphate buffered saline (without Mg²⁺ and Ca²⁺), pH 7.4, 150mM NaCl, 0.02% sodium azide and 50% glycerol.

Product Images



Western blot analysis of extracts from HepG2 cells, using SLC30A9 antibody.