

PACO22685

---

## Product Information

**Size:**

100ul

**Reactivity:**

Human, Mouse

**Source:**

Rabbit

**Isotype:**

IgG

**Applications:**

ELISA, WB

**Recommended dilutions:**

ELISA:1:2000-1:10000, WB:1:500-1:3000

**Protein Background:**

May be involved in fusion of retrograde transport vesicles derived from an endocytic compartment with the Golgi complex By similarity. UniProtKB P38166.

**Gene ID:**

SFT2D2

**Uniprot**

O95562

**Synonyms:**

dj74714. c1.2; flj34085; rp4-74714.1; sft2 domain containing 2; sft2b

**Immunogen:**

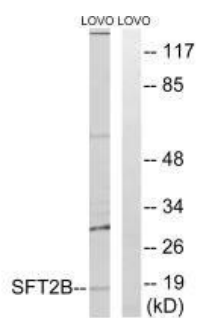
Synthesized peptide derived from internal of human SFT2B.

**Storage:**

Rabbit IgG in phosphate buffered saline (without Mg<sup>2+</sup> and Ca<sup>2+</sup>), pH 7.4, 150mM NaCl, 0.02% sodium azide and 50% glycerol.

## Product Images

---



Western blot analysis of extracts from LOVO cells, using SFT2B antibody.