

PACO22681

---

## Product Information

**Size:**

100ul

**Reactivity:**

Human, Mouse, Rat

**Source:**

Rabbit

**Isotype:**

IgG

**Applications:**

ELISA, WB

**Recommended dilutions:**

ELISA:1:2000-1:10000, WB:1:500-1:3000

**Protein Background:**

Involved in the biosynthesis of glycosaminoglycans; hyaluronan, chondroitin sulfate, and heparan sulfate.

**Gene ID:**

UGDH

**Uniprot**

O60701

**Synonyms:**

EC 1.1.1.22; GDH; UDP-Glc dehydrogenase; UDP-GlcDH; UDP-glucose 6-dehydrogenase

**Immunogen:**

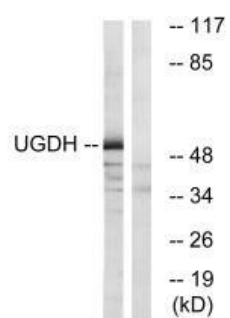
Synthesized peptide derived from internal of human UGDH.

**Storage:**

Rabbit IgG in phosphate buffered saline (without Mg<sup>2+</sup> and Ca<sup>2+</sup>), pH 7.4, 150mM NaCl, 0.02% sodium azide and 50% glycerol.

## Product Images

---



Western blot analysis of extracts from COLO cells, using UGDH antibody.