

PEAK1 Antibody



PACO22664

Product Information

Size:

100ul

Reactivity:

Human

Source:

Rabbit

Isotype:

IgG

Applications:

ELISA, WB

Recommended dilutions:

ELISA:1:2000-1:10000, WB:1:500-1:3000

Protein Background:

Tyrosine kinase that may play a role in cell spreading and migration on fibronectin. May directly or indirectly affect phosphorylation levels of cytoskeleton-associated proteins MAPK1/ERK and PXN.

Gene ID:

PEAK1

Uniprot

Q9H792

Synonyms:

Pseudopodium-enriched atypical kinase 1; Sugen kinase 269; Tyrosine-protein kinase SgK269; PEAK1; KIAA2002

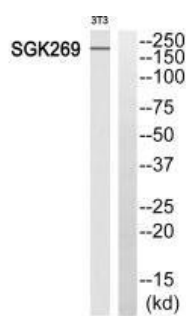
Immunogen:

Synthesized peptide derived from N-terminal of human SGK269.

Storage:

Rabbit IgG in phosphate buffered saline (without Mg²⁺ and Ca²⁺), pH 7.4, 150mM NaCl, 0.02% sodium azide and 50% glycerol.

Product Images



Western blot analysis of extracts from 3T3 cells, using SGK269 antibody.