

Product Information

Size:

100ul

Reactivity:

Human

Source:

Rabbit

Isotype:

IgG

Applications:

ELISA, WB

Recommended dilutions:

ELISA:1:2000-1:10000, WB:1:500-1:3000

Protein Background:

Interacts with the internal control region (ICR) of approximately 50 bases within the 5S RNA genes, is required for correct transcription of these genes by RNA polymerase III. Also binds the transcribed 5S RNA's. May initiate transcription of the 5S ribosomal RNA gene and maintain the stability of transcription of other genes.

Gene ID:

GTF3A

Uniprot

Q92664

Synonyms:

AP2; general transcription factor IIIA; GTF3A; TF3A; TFIIIA

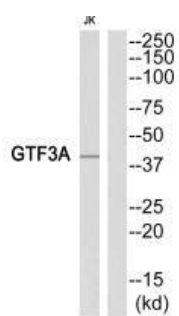
Immunogen:

Synthesized peptide derived from Internal of human GTF3A.

Storage:

Rabbit IgG in phosphate buffered saline (without Mg²⁺ and Ca²⁺), pH 7.4, 150mM NaCl, 0.02% sodium azide and 50% glycerol.

Product Images



Western blot analysis of extracts from Jurkat cells, using GTF3A antibody.