

### Product Information

**Size:**

100ul

**Reactivity:**

Human, Mouse, Rat

**Source:**

Rabbit

**Isotype:**

IgG

**Applications:**

ELISA, WB

**Recommended dilutions:**

ELISA:1:2000-1:10000, WB:1:500-1:3000

**Protein Background:**

May be involved in transcriptional regulation. Modulates various viral and cellular promoters in a promoter context-dependent manner. For example, transcription from the FOS promoter is increased, while Rous sarcoma virus (RSV) long terminal repeat (LTR) promoter activity is repressed. Does not bind DNA directly.

**Gene ID:**

TCEAL1

**Uniprot**

Q15170

**Synonyms:**

nuclear phosphoprotein p21/SIIR; p21; pp21; TCAL1; TCEAL1

**Immunogen:**

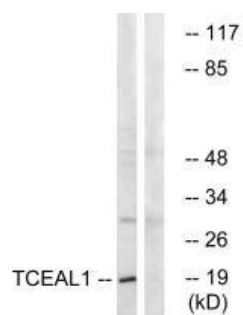
Synthesized peptide derived from internal of human TCEAL1.

**Storage:**

Rabbit IgG in phosphate buffered saline (without Mg<sup>2+</sup> and Ca<sup>2+</sup>), pH 7.4, 150mM NaCl, 0.02% sodium azide and 50% glycerol.

## Product Images

---



Western blot analysis of extracts from COLO cells, using TCEAL1 antibody.