

PACO22648

---

## Product Information

**Size:**

100ul

**Reactivity:**

Human

**Source:**

Rabbit

**Isotype:**

IgG

**Applications:**

ELISA, WB

**Recommended dilutions:**

ELISA:1:2000-1:10000, WB:1:500-1:3000

**Protein Background:**

Molecular chaperone; assists the folding of proteins upon ATP hydrolysis. Known to play a role, in vitro, in the folding of actin and tubulin By similarity.

**Gene ID:**

CCT7

**Uniprot**

Q99832

**Synonyms:**

TCP-1-eta; CCT-eta; HIV-1 Nef-interacting protein; CCTH; NIP7-1

**Immunogen:**

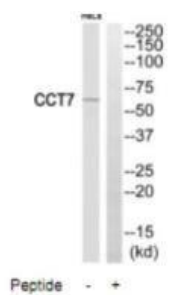
Synthesized peptide derived from internal of human CCT7.

**Storage:**

Rabbit IgG in phosphate buffered saline (without Mg<sup>2+</sup> and Ca<sup>2+</sup>), pH 7.4, 150mM NaCl, 0.02% sodium azide and 50% glycerol.

## Product Images

---



Western blot analysis of extracts from HeLa cells, using CCT7 antibody.