

SYT16 Antibody



PACO22641

Product Information

Size:

100ul

Reactivity:

Human

Source:

Rabbit

Isotype:

IgG

Applications:

ELISA, WB

Recommended dilutions:

ELISA:1:2000-1:10000, WB:1:500-1:3000

Protein Background:

May be involved in the trafficking and exocytosis of secretory vesicles in non-neuronal tissues. Is Ca²⁺-independent.

Gene ID:

SYT16

Uniprot

Q17RD7

Synonyms:

Synaptotagmin-16; Synaptotagmin XIV-related protein; Synaptotagmin 14-like protein; Chr14Syt; SYT16

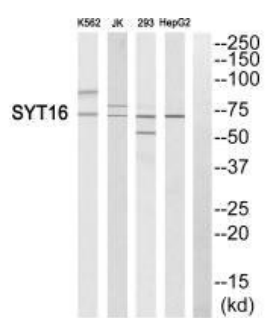
Immunogen:

Synthesized peptide derived from internal of human SYT16.

Storage:

Rabbit IgG in phosphate buffered saline (without Mg²⁺ and Ca²⁺), pH 7.4, 150mM NaCl, 0.02% sodium azide and 50% glycerol.

Product Images



Western blot analysis of extracts from K562 cells, Jurkat cells, 293 cells and HepG2 cells, using SYT16 antibody.