

# SYT13 Antibody



PACO22640

---

## Product Information

**Size:**

100ul

**Reactivity:**

Human

**Source:**

Rabbit

**Isotype:**

IgG

**Applications:**

ELISA, WB

**Recommended dilutions:**

ELISA:1:2000-1:10000, WB:1:500-1:3000

**Protein Background:**

May be involved in transport vesicle docking to the plasma membrane By similarity.

**Gene ID:**

SYT13

**Uniprot**

Q7L8C5

**Synonyms:**

Synaptotagmin-13; Synaptotagmin XIII; SytXIII; SYT13; KIAA1427

**Immunogen:**

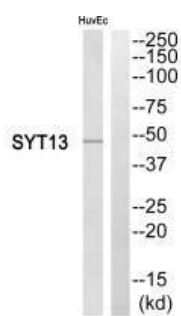
Synthesized peptide derived from internal of human SYT13.

**Storage:**

Rabbit IgG in phosphate buffered saline (without Mg<sup>2+</sup> and Ca<sup>2+</sup>), pH 7.4, 150mM NaCl, 0.02% sodium azide and 50% glycerol.

## Product Images

---



Western blot analysis of extracts from HuvEc cells, using SYT13 antibody.