

Product Information

Size:

100ul

Reactivity:

Human

Source:

Rabbit

Isotype:

IgG

Applications:

ELISA, WB

Recommended dilutions:

ELISA:1:2000-1:10000, WB:1:500-1:3000

Protein Background:

Interferes with CBL-mediated down-regulation and degradation of receptor-type tyrosine kinases. Promotes accumulation of activated target receptors, such as T-cell receptors, EGFR and PDGFRB, on the cell surface. Exhibits negligible protein tyrosine phosphatase activity at neutral pH. May act as a dominant-negative regulator of UBASH3B-dependent dephosphorylation. May inhibit dynamin-dependent endocytic pathways by functionally sequestering dynamin via its SH3 domain.

Gene ID:

UBASH3A

Uniprot

P57075

Synonyms:

Suppressor of T-cell receptor signaling 2; STS-2; Cbl-interacting protein 4; CLIP4; T-cell ubiquitin ligand

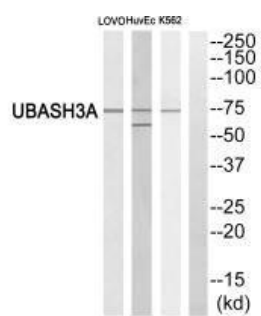
Immunogen:

Synthesized peptide derived from internal of human UBASH3A.

Storage:

Rabbit IgG in phosphate buffered saline (without Mg²⁺ and Ca²⁺), pH 7.4, 150mM NaCl, 0.02% sodium azide and 50% glycerol.

Product Images



Western blot analysis of extracts from LOVO cells, HuvEc cells and K562 cells, using UBASH3A antibody.