

SOS2 Antibody



PACO22628

Product Information

Size:

100ul

Reactivity:

Human

Source:

Rabbit

Isotype:

IgG

Applications:

ELISA, WB

Recommended dilutions:

ELISA:1:2000-1:10000, WB:1:500-1:3000

Protein Background:

Promotes the exchange of Ras-bound GDP by GTP By similarity.

Gene ID:

SOS2

Uniprot

Q07890

Synonyms:

Son of sevenless homolog 2; SOS-2; SOS2;

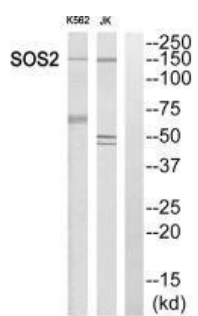
Immunogen:

Synthesized peptide derived from internal of human SOS2.

Storage:

Rabbit IgG in phosphate buffered saline (without Mg²⁺ and Ca²⁺), pH 7.4, 150mM NaCl, 0.02% sodium azide and 50% glycerol.

Product Images



Western blot analysis of extracts from K562 cells and Jurkat cells, using SOS2 antibody.