

SLC17A2 Antibody



PACO22624

Product Information

Size:

100ul

Reactivity:

Human, Mouse

Source:

Rabbit

Isotype:

IgG

Applications:

ELISA, WB

Recommended dilutions:

ELISA:1:2000-1:10000, WB:1:500-1:3000

Protein Background:

May be involved in actively transporting phosphate into cells via Na⁺ cotransport By similarity.

Gene ID:

SLC17A2

Uniprot

O00624

Synonyms:

Na(+)/PI cotransporter 3; NPT3; sodium phosphate transporter 3; sodium/phosphate cotransporter 3; solute carrier family 17 (sodium phosphate)

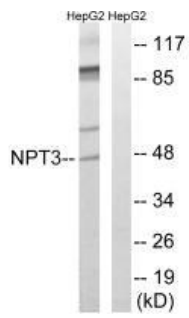
Immunogen:

Synthesized peptide derived from internal of human SLC17A2.

Storage:

Rabbit IgG in phosphate buffered saline (without Mg²⁺ and Ca²⁺), pH 7.4, 150mM NaCl, 0.02% sodium azide and 50% glycerol.

Product Images



Western blot analysis of extracts from HepG2 cells, using SLC17A2 antibody.