

PACO22621

Product Information

Size:

100ul

Reactivity:

Human, Mouse

Source:

Rabbit

Isotype:

IgG

Applications:

ELISA, WB

Recommended dilutions:

ELISA:1:2000-1:10000, WB:1:500-1:3000

Protein Background:

Transports 1 Ca²⁺ and 1 K⁺ in exchange for 4 Na⁺. Controls the rapid response termination and proper regulation of adaptation in olfactory sensory neurons (OSNs) which subsequently influences how odor information is encoded and perceived. May play a role in calcium transport during amelogenesis By similarity.

Gene ID:

SLC24A4

Uniprot

Q8NFF2

Synonyms:

Na(+)/K(+)/Ca(2+)-exchange protein 4; NCKX4; sodium/potassium/calcium exchanger 4; solute carrier family 24 (sodium/potassium/calcium exchanger); mem

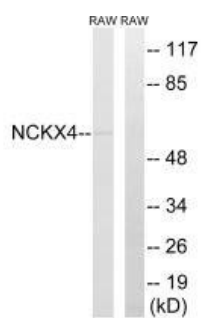
Immunogen:

Synthesized peptide derived from internal of human SLC24A4.

Storage:

Rabbit IgG in phosphate buffered saline (without Mg²⁺ and Ca²⁺), pH 7.4, 150mM NaCl, 0.02% sodium azide and 50% glycerol.

Product Images



Western blot analysis of extracts from RAW264.7 cells, using SLC24A4 antibody.