

SLC10A7 Antibody



PACO22618

Product Information

Size:

100ul

Reactivity:

Human

Source:

Rabbit

Isotype:

IgG

Applications:

ELISA, WB

Recommended dilutions:

ELISA:1:2000-1:10000, WB:1:500-1:3000

Protein Background:**Gene ID:**

SLC10A7

Uniprot

Q0GE19

Synonyms:

Sodium/bile acid cotransporter 7; Na(+)/bile acid cotransporter 7; Solute carrier family 10 member 7; SLC10A7; C4orf13

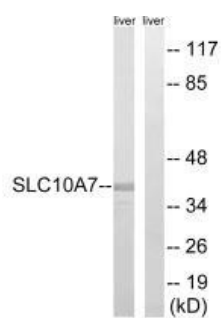
Immunogen:

Synthesized peptide derived from internal of human SLC10A7.

Storage:

Rabbit IgG in phosphate buffered saline (without Mg²⁺ and Ca²⁺), pH 7.4, 150mM NaCl, 0.02% sodium azide and 50% glycerol.

Product Images



Western blot analysis of extracts from mouse liver cells, using SLC10A7 antibody.