

# SLC6A8 Antibody



PACO22614

---

## Product Information

**Size:**

100ul

**Reactivity:**

Human

**Source:**

Rabbit

**Isotype:**

IgG

**Applications:**

ELISA, WB

**Recommended dilutions:**

ELISA:1:2000-1:10000, WB:1:500-1:3000

**Protein Background:**

Required for the uptake of creatine in muscles and brain.

**Gene ID:**

SLC6A8

**Uniprot**

P48029

**Synonyms:**

Sodium- and chloride-dependent creatine transporter 1; CT1; Creatine transporter 1; Solute carrier family 6 member 8; SLC6A8

**Immunogen:**

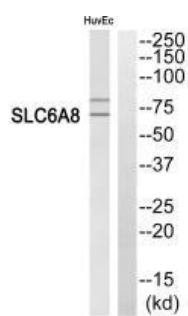
Synthesized peptide derived from C-terminal of human SLC6A8.

**Storage:**

Rabbit IgG in phosphate buffered saline (without Mg<sup>2+</sup> and Ca<sup>2+</sup>), pH 7.4, 150mM NaCl, 0.02% sodium azide and 50% glycerol.

## Product Images

---



Western blot analysis of extracts from HuvEc cells, using SLC6A8 antibody.