

SH3TC1 Antibody



PACO22610

Product Information

Size:

100ul

Reactivity:

Human

Source:

Rabbit

Isotype:

IgG

Applications:

ELISA, WB

Recommended dilutions:

ELISA:1:2000-1:10000, WB:1:500-1:3000

Protein Background:

Gene ID:

SH3TC1

Uniprot

Q8TE82

Synonyms:

SH3 domain and tetratricopeptide repeats-containing protein 1; SH3TC1;

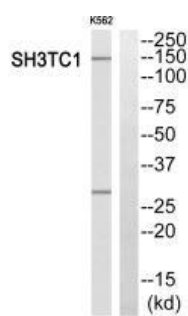
Immunogen:

Synthesized peptide derived from internal of human SH3TC1.

Storage:

Rabbit IgG in phosphate buffered saline (without Mg²⁺ and Ca²⁺), pH 7.4, 150mM NaCl, 0.02% sodium azide and 50% glycerol.

Product Images



Western blot analysis of extracts from K562 cells, using SH3TC1 antibody.