

SH2D5 Antibody



PACO22609

Product Information

Size:

100ul

Reactivity:

Human

Source:

Rabbit

Isotype:

IgG

Applications:

ELISA, WB

Recommended dilutions:

ELISA:1:2000-1:10000, WB:1:500-1:3000

Protein Background:

2 isoforms of the human protein are produced by alternative splicing.

Gene ID:

SH2D5

Uniprot

Q6ZV89

Synonyms:

SH2 domain-containing protein 5; SH2D5;

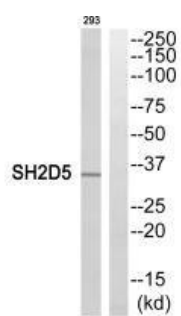
Immunogen:

Synthesized peptide derived from C-terminal of human SH2D5.

Storage:

Rabbit IgG in phosphate buffered saline (without Mg²⁺ and Ca²⁺), pH 7.4, 150mM NaCl, 0.02% sodium azide and 50% glycerol.

Product Images



Western blot analysis of extracts from 293 cells, using SH2D5 antibody.