

PLK3 Antibody



PACO22595

Product Information

Size:

100ul

Reactivity:

Human

Source:

Rabbit

Isotype:

IgG

Applications:

ELISA, WB

Recommended dilutions:

ELISA:1:2000-1:10000, WB:1:500-1:3000

Protein Background:**Gene ID:**

PLK3

Uniprot

Q9H4B4

Synonyms:

EC 2.7.11.21; Polo-like kinase 3; PLK-3; Cytokine-inducible serine/threonine-protein kinase; FGF-inducible kinase

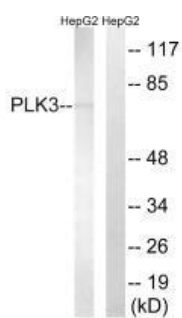
Immunogen:

Synthesized peptide derived from internal of human PLK3.

Storage:

Rabbit IgG in phosphate buffered saline (without Mg²⁺ and Ca²⁺), pH 7.4, 150mM NaCl, 0.02% sodium azide and 50% glycerol.

Product Images



Western blot analysis of extracts from HepG2 cells, using PLK3 antibody.