

PACO22593

Product Information

Size:

100ul

Reactivity:

Human

Source:

Rabbit

Isotype:

IgG

Applications:

ELISA, WB, IHC, IF

Recommended dilutions:

ELISA:1:2000-1:10000, WB:1:500-1:3000,
IHC:1:50-1:200, IF:1:100-1:200

Protein Background:

Belongs to the protein kinase superfamily. NEK Ser/Thr protein kinase family. NIMA subfamily.

Gene ID:

NEK5

Uniprot

Q6P3R8

Synonyms:

NimA-related protein kinase 5;

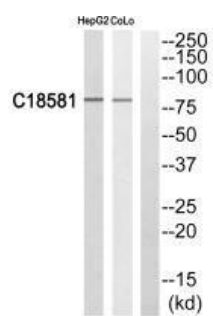
Immunogen:

Synthesized peptide derived from internal of human NEK5.

Storage:

Rabbit IgG in phosphate buffered saline (without Mg²⁺ and Ca²⁺), pH 7.4, 150mM NaCl, 0.02% sodium azide and 50% glycerol.

Product Images



Western blot analysis of extracts from HepG2 cells and COLO205 cells, using NEK5 antibody.