

SEPT14 Antibody



PACO22588

Product Information

Size:

100ul

Reactivity:

Human

Source:

Rabbit

Isotype:

IgG

Applications:

ELISA, WB

Recommended dilutions:

ELISA:1:2000-1:10000, WB:1:500-1:3000

Protein Background:

Gene ID:

41883

Uniprot

Q6ZU15

Synonyms:

Septin-14; SEPT14;

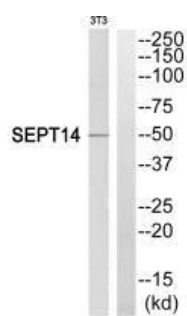
Immunogen:

Synthesized peptide derived from C-terminal of human SEPT14.

Storage:

Rabbit IgG in phosphate buffered saline (without Mg²⁺ and Ca²⁺), pH 7.4, 150mM NaCl, 0.02% sodium azide and 50% glycerol.

Product Images



Western blot analysis of extracts from NIH/3T3 cells, using SEPT14 antibody.