

PACO22587

Product Information

Size:

100ul

Reactivity:

Human

Source:

Rabbit

Isotype:

IgG

Applications:

ELISA, WB

Recommended dilutions:

ELISA:1:2000-1:10000, WB:1:500-1:3000

Protein Background:

Probable guanine nucleotide exchange factor (GEF), which may be involved in the secretion process.

Gene ID:

SERGEF

Uniprot

Q9UGK8

Synonyms:

Guanine nucleotide exchange factor-related protein; Deafness locus-associated putative guanine nucleotide exchange factor; DelGEF;

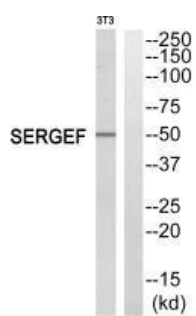
Immunogen:

Synthesized peptide derived from internal of human SERGEF.

Storage:

Rabbit IgG in phosphate buffered saline (without Mg²⁺ and Ca²⁺), pH 7.4, 150mM NaCl, 0.02% sodium azide and 50% glycerol.

Product Images



Western blot analysis of extracts from NIH/3T3 cells, using SERGEF antibody.