

RUFY1 Antibody



PACO22584

Product Information

Size:

100ul

Reactivity:

Human

Source:

Rabbit

Isotype:

IgG

Applications:

ELISA, WB

Recommended dilutions:

ELISA:1:2000-1:10000, WB:1:500-1:3000

Protein Background:

Binds phospholipid vesicles containing phosphatidylinositol 3-phosphate and participates in early endosomal trafficking.

Gene ID:

RUFY1

Uniprot

Q96T51

Synonyms:

FYVE-finger protein EIP1; Zinc finger FYVE domain-containing protein 12; La-binding protein 1; Rab4-interacting protein;

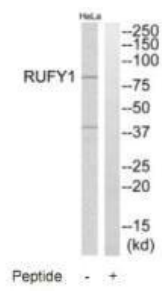
Immunogen:

Synthesized peptide derived from internal of human RUFY1.

Storage:

Rabbit IgG in phosphate buffered saline (without Mg²⁺ and Ca²⁺), pH 7.4, 150mM NaCl, 0.02% sodium azide and 50% glycerol.

Product Images



Western blot analysis of extracts from HeLa cells, using RUFY1 antibody.