

PACO22564

Product Information

Size:

100ul

Reactivity:

Human

Source:

Rabbit

Isotype:

IgG

Applications:

ELISA, WB

Recommended dilutions:

ELISA:1:2000-1:10000, WB:1:500-1:3000

Protein Background:

Involved in the cornified cell envelope formation. Multifunctional epidermal matrix protein. Reversibly binds calcium.

Gene ID:

RPTN

Uniprot

Q6XPR3

Synonyms:

Repetin; RPTN;

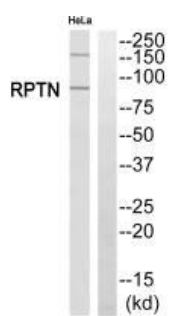
Immunogen:

Synthesized peptide derived from C-terminal of human RPTN.

Storage:

Rabbit IgG in phosphate buffered saline (without Mg²⁺ and Ca²⁺), pH 7.4, 150mM NaCl, 0.02% sodium azide and 50% glycerol.

Product Images



Western blot analysis of extracts from HeLa cells, using RPTN antibody.