

RAB6C Antibody



PACO22557

Product Information

Size:

100ul

Reactivity:

Human, Mouse, Rat

Source:

Rabbit

Isotype:

IgG

Applications:

ELISA, WB

Recommended dilutions:

ELISA:1:2000-1:10000, WB:1:500-1:3000

Protein Background:

May be involved in the regulation of centrosome duplication and cell cycle progression.

Gene ID:

RAB6C

Uniprot

Q9H0N0

Synonyms:

gtp-binding protein rab6c; rab gtpase rab6a; rab6; rab6a; member ras oncogene family

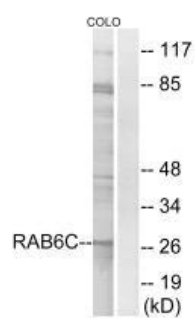
Immunogen:

Synthesized peptide derived from internal of human RAB6C.

Storage:

Rabbit IgG in phosphate buffered saline (without Mg²⁺ and Ca²⁺), pH 7.4, 150mM NaCl, 0.02% sodium azide and 50% glycerol.

Product Images



Western blot analysis of extracts from COLO cells, using RAB6C antibody.