

# RASL10B Antibody



PACO22550

---

## Product Information

**Size:**

100ul

**Reactivity:**

Human, Mouse

**Source:**

Rabbit

**Isotype:**

IgG

**Applications:**

ELISA, WB

**Recommended dilutions:**

ELISA:1:2000-1:10000, WB:1:500-1:3000

**Protein Background:**

May facilitate the release of atrial natriuretic peptide by cardiomyocytes and hence play a role in the regulation of arterial pressure By similarity.

**Gene ID:**

RASL10B

**Uniprot**

Q96S79

**Synonyms:**

Ras-like protein family member 10B; Ras-like protein VTS58635;

**Immunogen:**

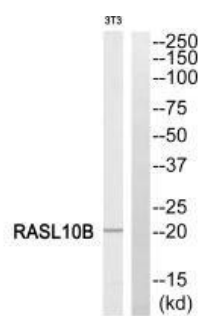
Synthesized peptide derived from internal of human RASL10B.

**Storage:**

Rabbit IgG in phosphate buffered saline (without Mg<sup>2+</sup> and Ca<sup>2+</sup>), pH 7.4, 150mM NaCl, 0.02% sodium azide and 50% glycerol.

## Product Images

---



Western blot analysis of extracts from 3T3 cells, using RASL10B antibody.