

RANBP17 Antibody



PACO22543

Product Information

Size:

100ul

Reactivity:

Human

Source:

Rabbit

Isotype:

IgG

Applications:

ELISA, WB

Recommended dilutions:

ELISA:1:2000-1:10000, WB:1:500-1:3000

Protein Background:

May function as a nuclear transport receptor By similarity.

Gene ID:

RANBP17

Uniprot

Q9H2T7

Synonyms:

Ran-binding protein 17; RANBP17;

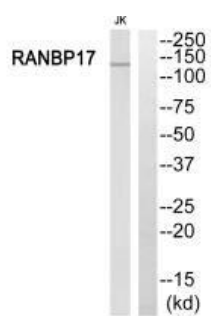
Immunogen:

Synthesized peptide derived from N-terminal of human RANBP17.

Storage:

Rabbit IgG in phosphate buffered saline (without Mg²⁺ and Ca²⁺), pH 7.4, 150mM NaCl, 0.02% sodium azide and 50% glycerol.

Product Images



Western blot analysis of extracts from Jurkat cells, using RANBP17 antibody.