

RABEP2 Antibody



PACO22536

Product Information

Size:

100ul

Reactivity:

Human, Mouse, Rat

Source:

Rabbit

Isotype:

IgG

Applications:

ELISA, WB

Recommended dilutions:

ELISA:1:2000-1:10000, WB:1:500-1:3000

Protein Background:

Plays a role in membrane trafficking and in homotypic early endosome fusion.

Gene ID:

RABEP2

Uniprot

Q9H5N1

Synonyms:

rab GTPase-binding effector protein 2; rabaptin-5beta; rabe2; rabpt5b;

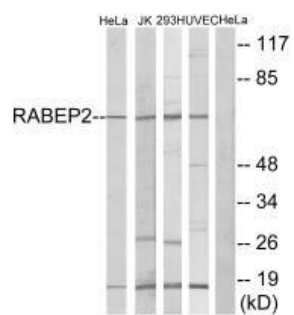
Immunogen:

Synthesized peptide derived from internal of human RABEP2.

Storage:

Rabbit IgG in phosphate buffered saline (without Mg²⁺ and Ca²⁺), pH 7.4, 150mM NaCl, 0.02% sodium azide and 50% glycerol.

Product Images



Western blot analysis of extracts from HeLa cells, Jurkat cells, 293 cells and HUVEC cells, using RABEP2 antibody.