

# PWWP2B Antibody



PACO22532

---

## Product Information

**Size:**

100ul

**Reactivity:**

Human

**Source:**

Rabbit

**Isotype:**

IgG

**Applications:**

ELISA, WB

**Recommended dilutions:**

ELISA:1:2000-1:10000, WB:1:500-1:3000

**Protein Background:**

a protein of unknown function.

**Gene ID:**

PWWP2B

**Uniprot**

Q6NUJ5

**Synonyms:**

PWP2B; PWWP domain-containing protein 2;

**Immunogen:**

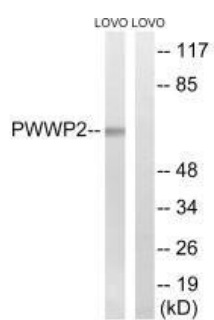
Synthesized peptide derived from internal of human PWWP2B.

**Storage:**

Rabbit IgG in phosphate buffered saline (without Mg<sup>2+</sup> and Ca<sup>2+</sup>), pH 7.4, 150mM NaCl, 0.02% sodium azide and 50% glycerol.

## Product Images

---



Western blot analysis of extracts from LOVO cells, using PWWP2B antibody.