

S100Z Antibody



PACO22530

Product Information

Size:

100ul

Reactivity:

Human

Source:

Rabbit

Isotype:

IgG

Applications:

ELISA, WB

Recommended dilutions:

ELISA:1:2000-1:10000, WB:1:500-1:3000

Protein Background:

Members of the S100 protein family contain 2 calcium-binding EF-hands and exhibit cell-type specific expression patterns. For additional background information on S100 proteins, see MIM 114085. [supplied by OMIM, Mar 2008].

Gene ID:

S100Z

Uniprot

Q8WXG8

Synonyms:

Protein S100-Z; S100 calcium-binding protein Z;

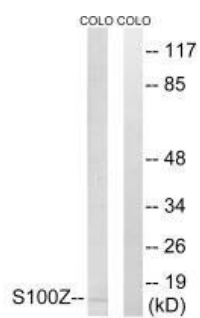
Immunogen:

Synthesized peptide derived from internal of human S100Z.

Storage:

Rabbit IgG in phosphate buffered saline (without Mg²⁺ and Ca²⁺), pH 7.4, 150mM NaCl, 0.02% sodium azide and 50% glycerol.

Product Images



Western blot analysis of extracts from COLO cells, using S100Z antibody.